

Social Determinants Of Health

This program is paid for by
Otsuka Pharmaceutical Development & Commercialization, Inc. and
Lundbeck, LLC.

Speakers are employees and/or paid consultants for Otsuka
Pharmaceutical Development & Commercialization, Inc.

Objectives



- Discuss Health Equity and Social Determinants of Health (SDoH)
 - What is the relationship to Population Health?



- Discuss how SDoH impacts the economics of the population



- Discuss a recent pandemic's impact and correlation to SDoH



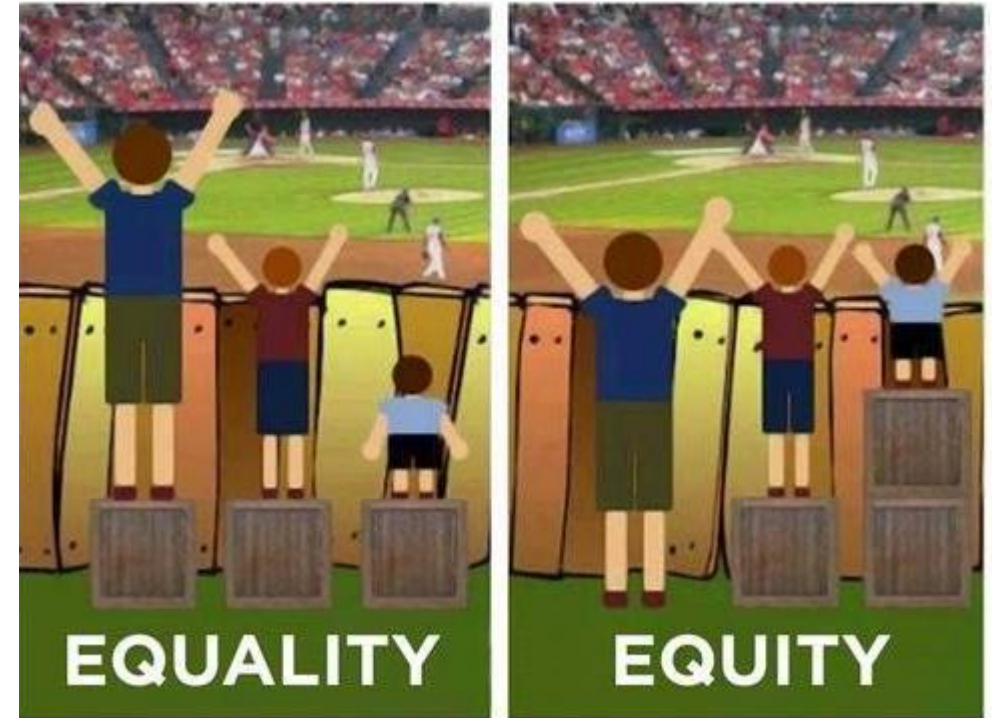
- Discuss how payors utilize SDoH data to influence decisions and program investments



- Discuss how SDoH can impact value-based payment methods

Health Equity

- **Health Equity** is achieved when every person has the opportunity to “attain his or her full health potential” and no one is “disadvantaged from achieving this potential because of **social position** or **other socially determined circumstances**.”
- **Health Inequities** are reflected in differences including:
 - **length of life; quality of life; rates of disease, disability, and death; severity of disease; and access to treatment**



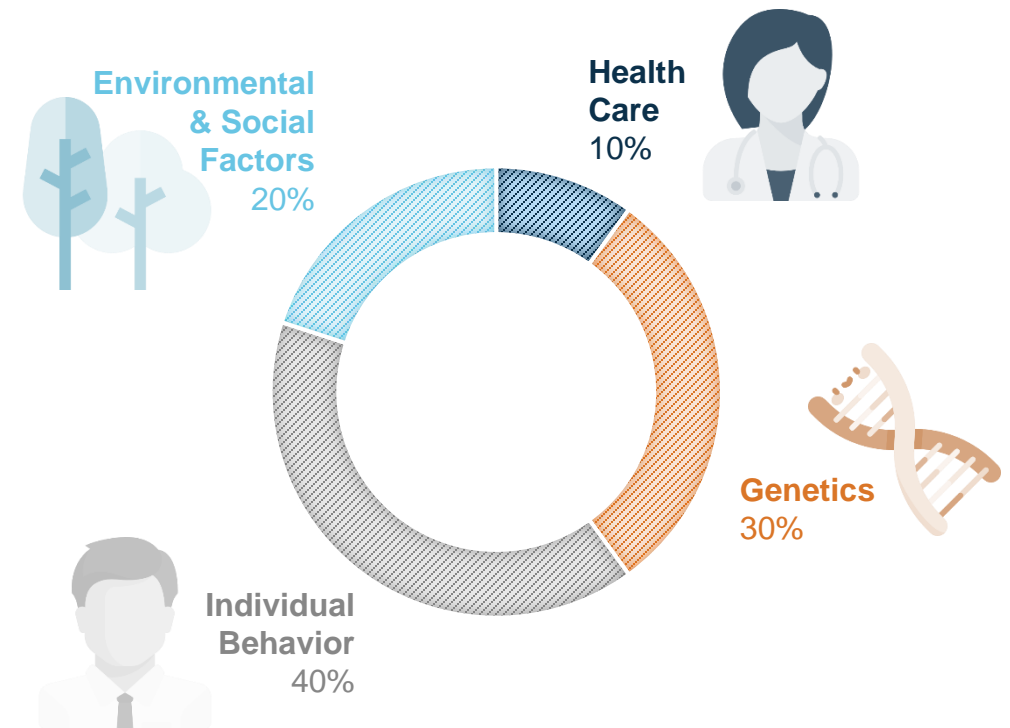
<https://www.cdc.gov/chronicdisease/healthequity/index.htm>: Accessed on July 11th, 2020.

Social Determinants Of Health

What Are They & Why Are They Important?

- Social Determinants of Health (SDoH) are conditions in the environment in which people are born, live, learn, work, play, worship, and age that affect a wide range of health, functioning, and quality-of-life outcomes and risks¹

Impacts Of Different Factors On Risk Of Premature Death^{2,3}



1. Health People 2020: <https://www.healthypeople.gov/2020/topics-objectives/topic/social-determinants-of-health>
2. Artiga, S., & Hinton, E. (2018). Beyond healthcare: The role of social determinants in promoting health and health equality. Washington, DC: The Henry J. Kaiser Family Foundation (KFF). Retrieved from <https://www.kff.org/disparities-policy/issue-brief/beyond-health-care-the-role-of-social-determinants-in-promoting-health-and-health-equity/>.
3. Scroeder, S.A. (2007). We can do better – improving the health of the American people. *New England Journal of Medicine*, 357; pp. 1221-1228. Retrieved from <https://www.nejm.org/doi/full/10.1056/NEJMsa073350>.

Social Determinants Of Health

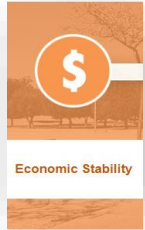
Domains & Examples^{1,2}



1. Office of Disease Prevention & Health Promotion (ODPHP). (n.d.). Healthy people 2020: Social determinants of health: Explore resources related to the social determinants of health. Rockville, MD: U.S. Department Of Health & Human Services ODPHP. Retrieved from <https://www.healthypeople.gov/2020/topics-objectives/topic/social-determinants-health/interventions-resources>.
2. Artiga, S., & Hinton, E. (2018). Beyond healthcare: The role of social determinants in promoting health and health equality. Washington, DC: The Henry J. Kaiser Family Foundation (KFF). Retrieved from <https://www.kff.org/disparities-policy/issue-brief/beyond-health-care-the-role-of-social-determinants-in-promoting-health-and-health-equity/>.

Social Determinants Of Health

Metrics & Factors Of Impact

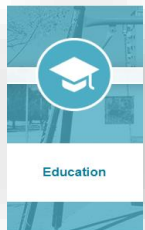


Metrics

- Proportion Of Children Aged 0-17 Years Living With At Least One Parent Employed Year Round, Full Time
- Proportion Of Persons Living Below The Poverty Threshold
- Proportion Of Households Experiencing Housing Cost Burden (e.g. spent > 30% / 50% of income on housing)

Impacting Factors

Eliminating very low food security among children; reducing household food insecurity thereby reducing hunger



Metrics

- Proportion Of High School Completers Enrolled In College The October Immediately After Completing High School

Impacting Factors

Increasing the proportion of students who graduate high school with a regular diploma in four years*; increasing the proportion of fourth grade students reading at or above grade level; increasing the number of children with disabilities who receive early intervention services in home- or community-based settings; increasing the proportion of parents who read to their young children



Impacting Factors

Increasing proportion of persons with medical insurance / a usual primary care provider / a specific source of ongoing care*; reducing the proportion of person who are unable to obtain or delay in obtaining necessary medical or dental care, or prescription medication; increasing the proportion of persons who receive easy-to-understand instructions to take care of their conditions



Impacting Factors

Reducing the rate of minor and young adult perpetration of violent or property crimes; reducing the number of days the Air Quality Index exceeds 100*; reducing blood lead level in children aged 1-5 years; reducing proportion of occupied housing units that have moderate / severe structural problems; reducing homicides and physical assaults*; reducing exposure to violence; increasing states will policies to incentivize food retail outlets to provide foods encouraged by dietary guidelines for Americans



Metrics

- Proportion Of Children Aged 0-17 Years Who Have Ever Lived With A Parent Who Has Served Time In Jail / Prison
- Proportion Of Persons Eligible To Participate In Elections Who Register & Actually Vote

Impacting Factors

Increasing the proportion of adolescents who have an adult in their lives with whom they can talk about serious problems; increasing the proportion of adults with disabilities who report sufficient social and emotional support; increasing the proportion of parents who use positive communication with their children

Office of Disease Prevention & Health Promotion (ODPHP). (n.d.). Healthy people 2020: Social determinants of health: Objectives. Rockville, MD: U.S. Department Of Health & Human Services ODPHP. Retrieved from <https://www.healthypeople.gov/2020/topics-objectives/topic/Adolescent-Health/objectives>. Accessed July 11, 2020.

The Link Between Population Health & SDoH



- Healthcare leaders are increasingly aware of the data and research that indicates that the social determinants of health have a higher impact on population health than healthcare and that a higher ratio of social service spending versus healthcare spending results in improved population health
- According to a study published by the National Center for Biotechnology Information, states that allocate more resources to social services than to medical expenditures have substantially improved health outcomes over states that do not
 - States that provide higher levels of social services are outperforming their counterparts in areas such as obesity, asthma, mental health, cancer, myocardial infarction and type 2 diabetes



Bradley EH, Canavan M, Rogan E, Talbert-Slagle K, Ndumele C, Taylor L, Curry LA. Variation In Health Outcomes: The Role Of Spending On Social Services, Public Health, And Health Care, 2000-09. Health Aff (Millwood). 2016 May 1;35(5):760-8. doi: 10.1377/hlthaff.2015.0814. PMID: 27140980.

What Is Population Health?

Population Health

- **“The health outcomes of a group of individuals, including the distribution of such outcomes within the group.** These groups are often geographic populations such as nations or communities, but can also be other groups such as employees, ethnic groups, disabled persons, prisoners, or any other defined group.”¹

- David Kindig

Population Health Management

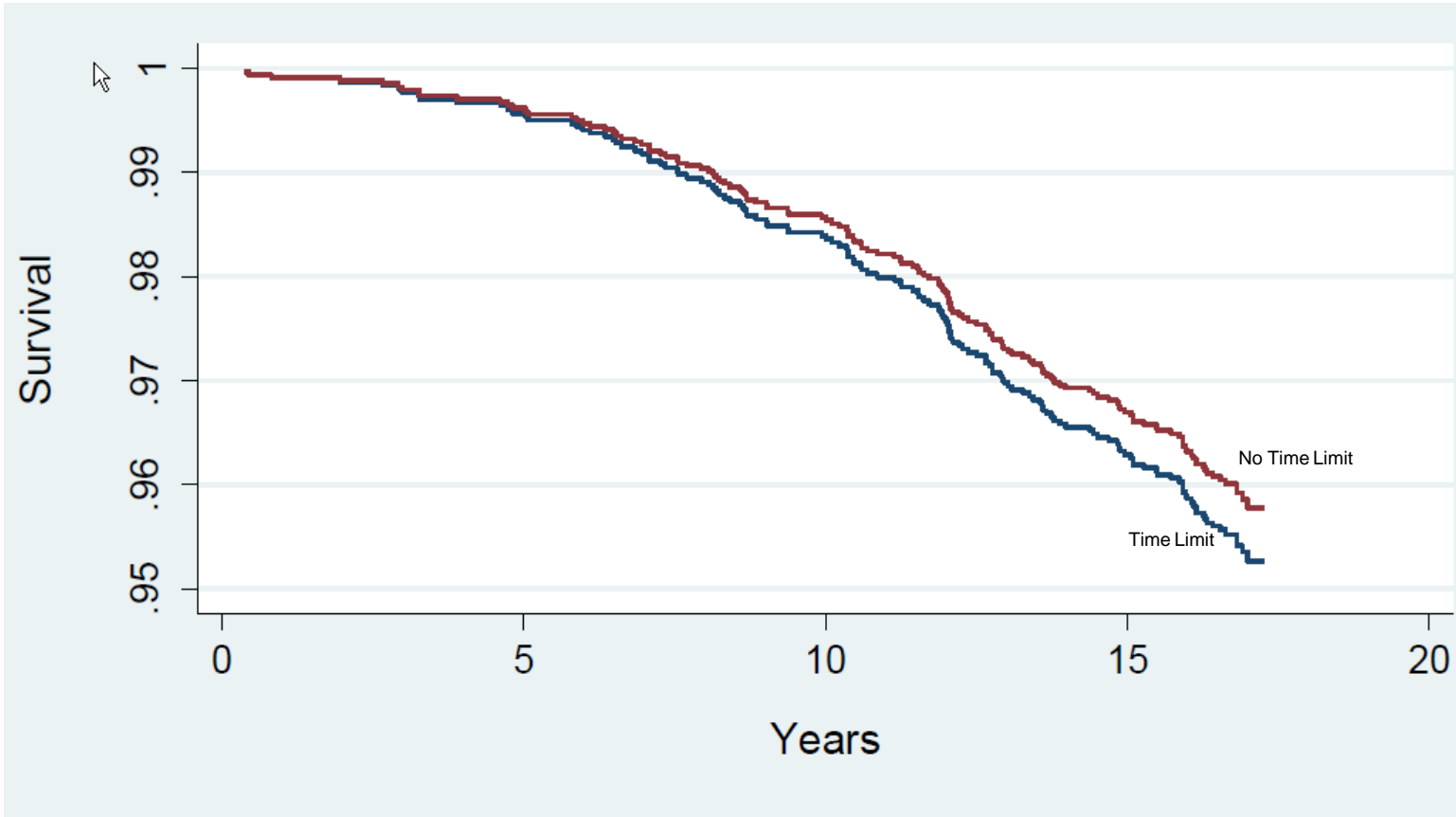
- A model of care that addresses individuals' health needs at all points along the continuum of care, including in the community setting, through participation, engagement and targeted interventions for a defined population.
- Aims to maintain or improve the physical and psychosocial well-being of individuals and address health disparities through cost-effective and tailored health solutions.²

1. <http://www.ihl.org/communities/blogs/population-health-population-management-terminology-in-us-health-care>. Accessed on July 11th, 2020.

2. https://www.ncqa.org/wp-content/uploads/2018/08/20180827_PHM_PHM_Resource_Guide.pdf. Accessed on July 11th, 2020.

Examples: Welfare Time Limit May Negatively Affect Mortality

A Randomized Trial in Florida (n=3,224)

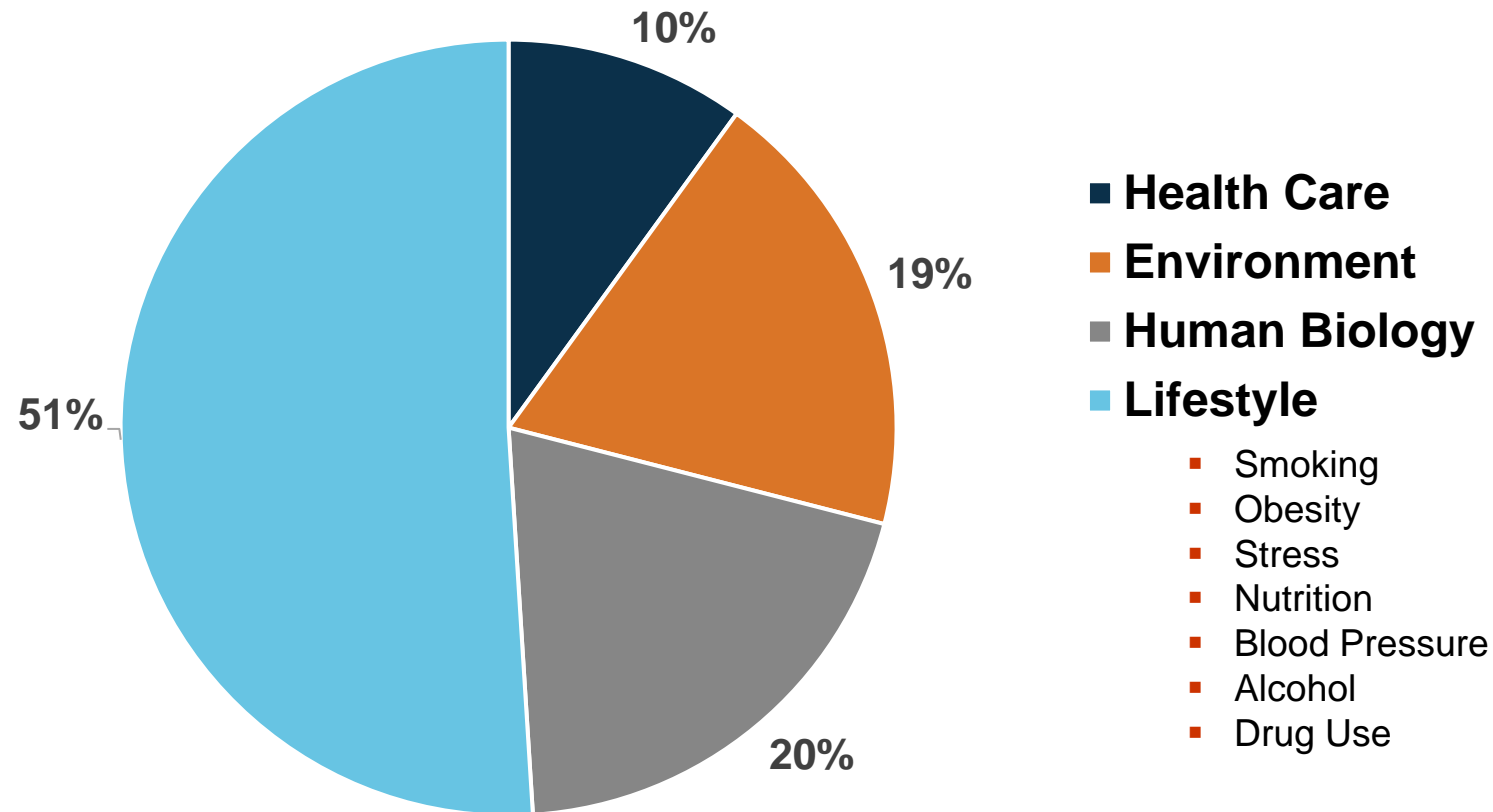


Mortality rates 16% higher in group with welfare time limits

(hazard ratio: 1.16; 95% confidence interval: 1.14, 1.19; $p < 0.01$)

Muenning, P. (2013, June). *Survival curves for participants in Florida's Family Transition Program (Treated) and in traditional Aid to Families with Dependent Children (Not Treated) in Escambia County*. Retrieved from Health Affairs: http://content.healthaffairs.org/content/suppl/2013/05/23/32.6.1072.DC1/2012-0971_Muennig_Appendix.pdf; and Muenning, P. (2013, June). Welfare programs that target workforce participation may negatively affect mortality. Retrieved November 2016 from Health Affairs: <http://content.healthaffairs.org/content/32/6/1072.abstract>

Factors That Influence Health Status



Evans, A. C. (2016, August) *Beyond the Black Box: The Transition to a Population Health Approach*. A power point presentation at The MHS Conference, Auckland, New Zealand

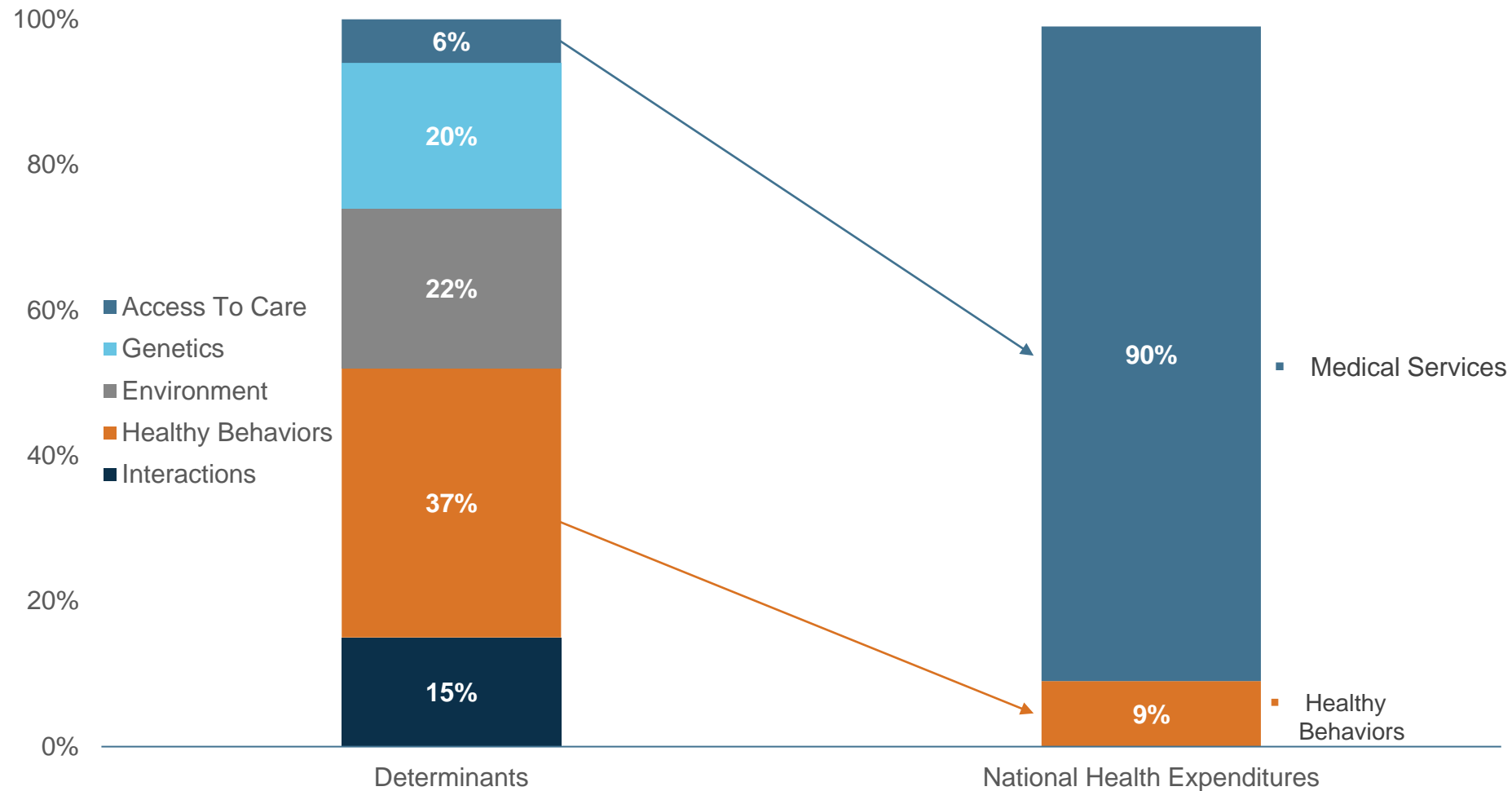
Health Disparities Have Significant Economic Impacts

Eliminating disparities in morbidity and mortality for people with less than a college education would have an estimated economic value of \$1.02 trillion.

Eliminating racial and ethnic disparities would reduce medical care costs by \$230 billion and indirect costs of excess morbidity and mortality by more than \$1 trillion over four years.

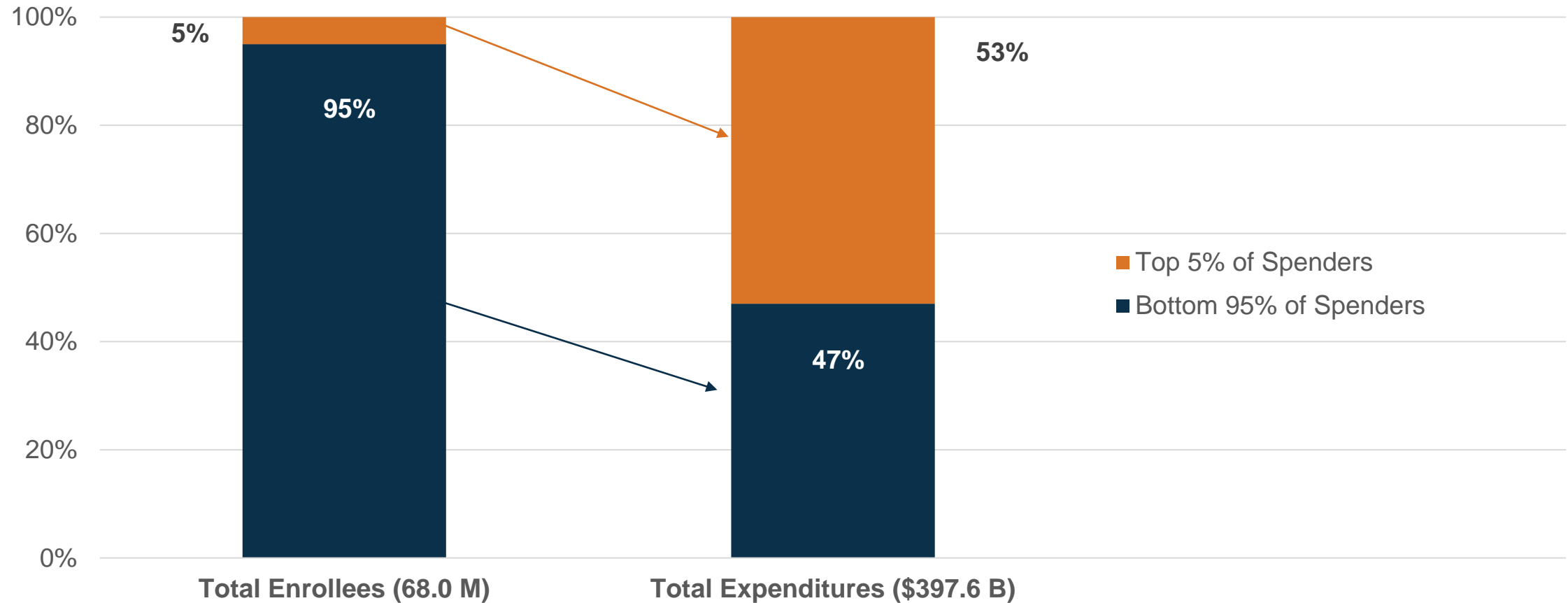
Thornton, R. L. J. (2016, August). Evaluating Strategies For Reducing Health Disparities By Addressing The Social Determinants Of Health. Retrieved October 2016 from <http://content.healthaffairs.org/content/35/8/1416.full>

The Spending Mismatch: Health Determinants vs. Health Expenditures



Grogan, P. S. (2013). Healthy People / Healthy Economy Annual Report Card 2013. Retrieved October 2016 from [www.NEHI.net](http://www.nehi.net/writable/publication_files/file/hphe.final_2013_3rd_report_card.pdf): http://www.nehi.net/writable/publication_files/file/hphe.final_2013_3rd_report_card.pdf

5% Of Medicaid Enrollees Account For More Than 50% Of Spending (2011)



Paradise, J. (2015, March 9). Medicaid Moving Forward. Retrieved October 2016 from [www.KFF.org](http://kff.org/health-reform/issue-brief/medicaid-moving-forward/): <http://kff.org/health-reform/issue-brief/medicaid-moving-forward/>. Accessed July 11, 2020.

Social Determinants Of Health

Initiatives In Process^{1,2}

Medicare & Medicaid

- “Accountable Health Communities”
- SIM Initiative
- Delivery System & Payment Reform Initiatives
- Section 1115 Medicaid Demonstration waivers
- ACOs Including Population-Based Payments
- DSRIP Programs
- Health Home Options Established By The ACA
- Housing Supports Through State Plan / Waiver Authorities
- Voluntary Supported Employment Services
- MMCOs & Connections To Social Services

ACA = Patient Protection & Affordable Health Act; ACO = Accountable Care Organization; DSRIP = Delivery System Reform Incentive Payment; MMCO = Medicaid Managed Care Organization; SIM = State Innovation Model

1. Artiga, S., & Hinton, E. (2018). Beyond healthcare: The role of social determinants in promoting health and health equality. Washington, DC: The Henry J. Kaiser Family Foundation (KFF). Retrieved from <https://www.kff.org/disparities-policy/issue-brief/beyond-health-care-the-role-of-social-determinants-in-promoting-health-and-health-equity/>.
2. HealthEdge. (n.d.) Social determinants of health – what are payers doing? Retrieved from <https://www.healthedge.com/blog-social-determinants-health-what-are-payers-doing>.

State-Based Policies

- “Health In All Policies”
- Supporting Healthier Retail Store Options In Low-Income Communities
- Supporting Early Childhood Education To Reduce The Achievement Gap
- Farm-To-School Programs
- Community & School Gardens
- Connecting & Coordinating Support Organizations
- Place-Based Initiatives Including Cross-Sector Stakeholders
- Increasing Availability & Accessibility Of Public Transportation

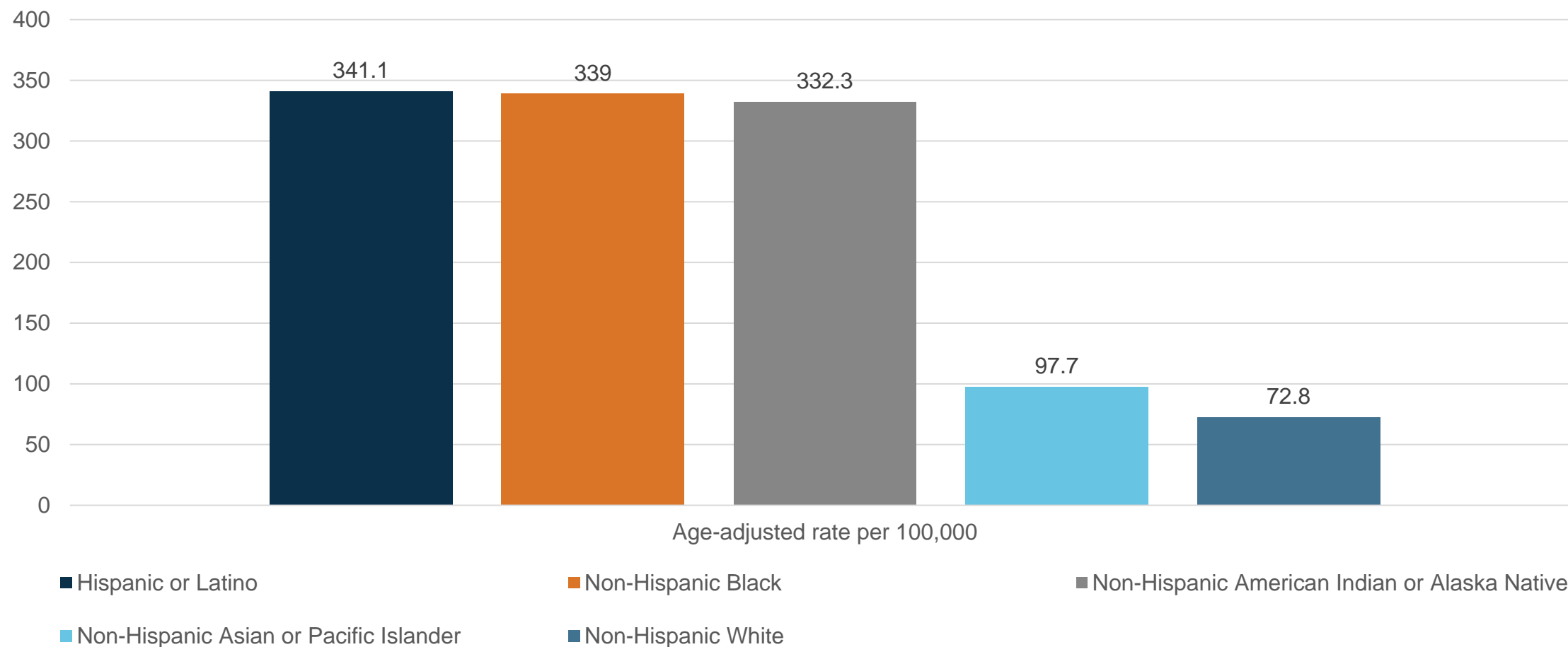
Payer & Provider Initiatives

- Supported Employment
- Increased Public Transportation Access & Availability / Providing Transport
- Nutrition / Food As Medicine Programs
- Supportive Housing
- Addressing Racial / Ethnic Disparities In Access, Screening, & Treatment

COVID-19 Pandemic and SDoH

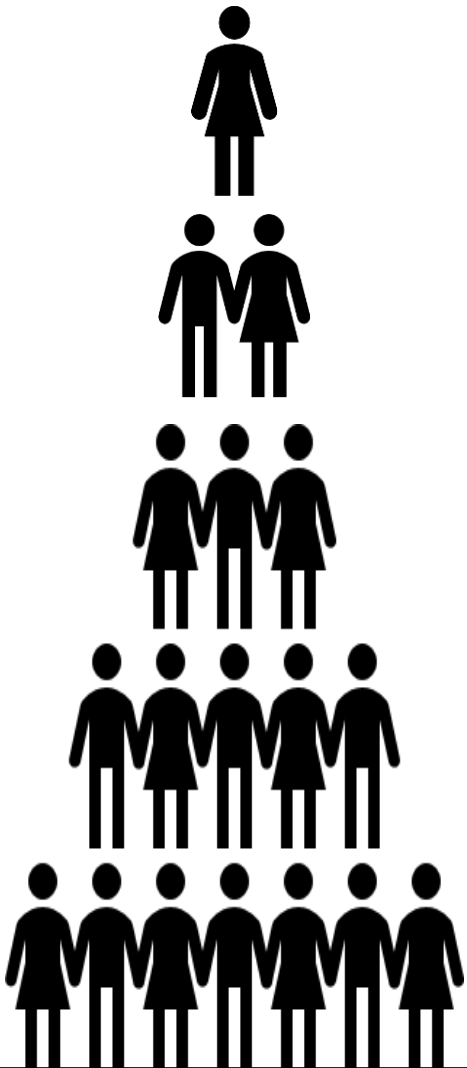


COVID-19 Breakdown By Race



<https://www.cdc.gov/coronavirus/2019-ncov/covid-data/covidview/index.html>. Accessed As Of Sept 6th, 2020.

COVID-19 Emphasizes That Many Different Factors Affect Health



Healthcare Delivery

HEALTHCARE
ACCESS

EVIDENCE-BASED
MEDICINE
EXPERTISE VALUES EVIDENCE



Understand your
health coverage.



Health Behaviors/Genetics



Physical Environment



Socioeconomics



Social Determinants Of Health Housing Stability

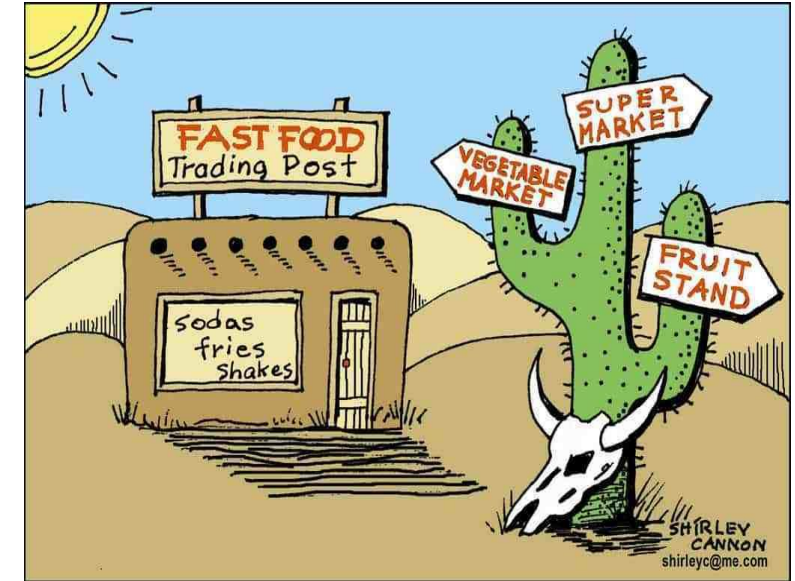


- There are some specific social determinant factors that are likely to have a greater impact in the post-crisis recovery period. Based on previous research, at the top of that list is **housing insecurity** and **food insecurity**.¹
- With a 20-point increase in unemployment during the pandemic, a wave of mortgage foreclosures and rental evictions are likely to follow. A third of the 13.4 million renters in the U.S. (31%) could not pay their rent at the beginning of the pandemic.^{2,3}
- Past research has also found that consumers who lack housing stability have higher rates of emergency department use and hospitalizations.⁴

1. Oss ME. A New Look at Social Determinants, Post-Pandemic. Open Minds. <https://www.openminds.com/market-intelligence/executive-briefings/a-new-look-at-social-determinants-post-pandemic/>. Accessed on July 11th 2020.
2. Andrew S, Bahney A. New data shows more Americans are having trouble paying their rent. CNN. April 11, 2020. https://www.cnn.com/2020/04/09/business/americans-rent-payment-trnd/index.html?utm_source=OPEN+MINDS+Circle&utm_campaign=1b196435bf-EMAIL_CAMPAIGN_2020_05_12_04_08&utm_medium=email&utm_term=0_eecbede49c-1b196435bf-161440744. Accessed July 11, 2020.
3. Contrera J, Jan T. Facing Eviction as Millions Shelter in Place. The Washington Post. March 22, 2020. https://www.washingtonpost.com/dc-md-va/2020/03/22/evictions-coronavirus-renters-shelter-in-place/?utm_source=OPEN+MINDS+Circle&utm_campaign=1b196435bf-EMAIL_CAMPAIGN_2020_05_12_04_08&utm_medium=email. Accessed Sept 9, 2020.
4. Kushel MB, Gupta R, Gee L, Haas JS. Housing instability and food insecurity as barriers to health care among low-income Americans. *J Gen Intern Med*. 2006;21(1):71-77. doi:10.1111/j.1525-1497.2005.00278.x

Social Determinants Of Health Food Stability

- Healthcare costs for food insecure adults are \$1,834 higher annually than people who are food secure.¹
- Food insecurity added about 11% to the healthcare costs of older adults.²
- This is happening at a time when access to SNAP and food assistance benefits has been tightened. And aggravating the situation was a report that in April 2020, grocery prices have jumped 2.6%—the largest one-month increase since February 1974.³



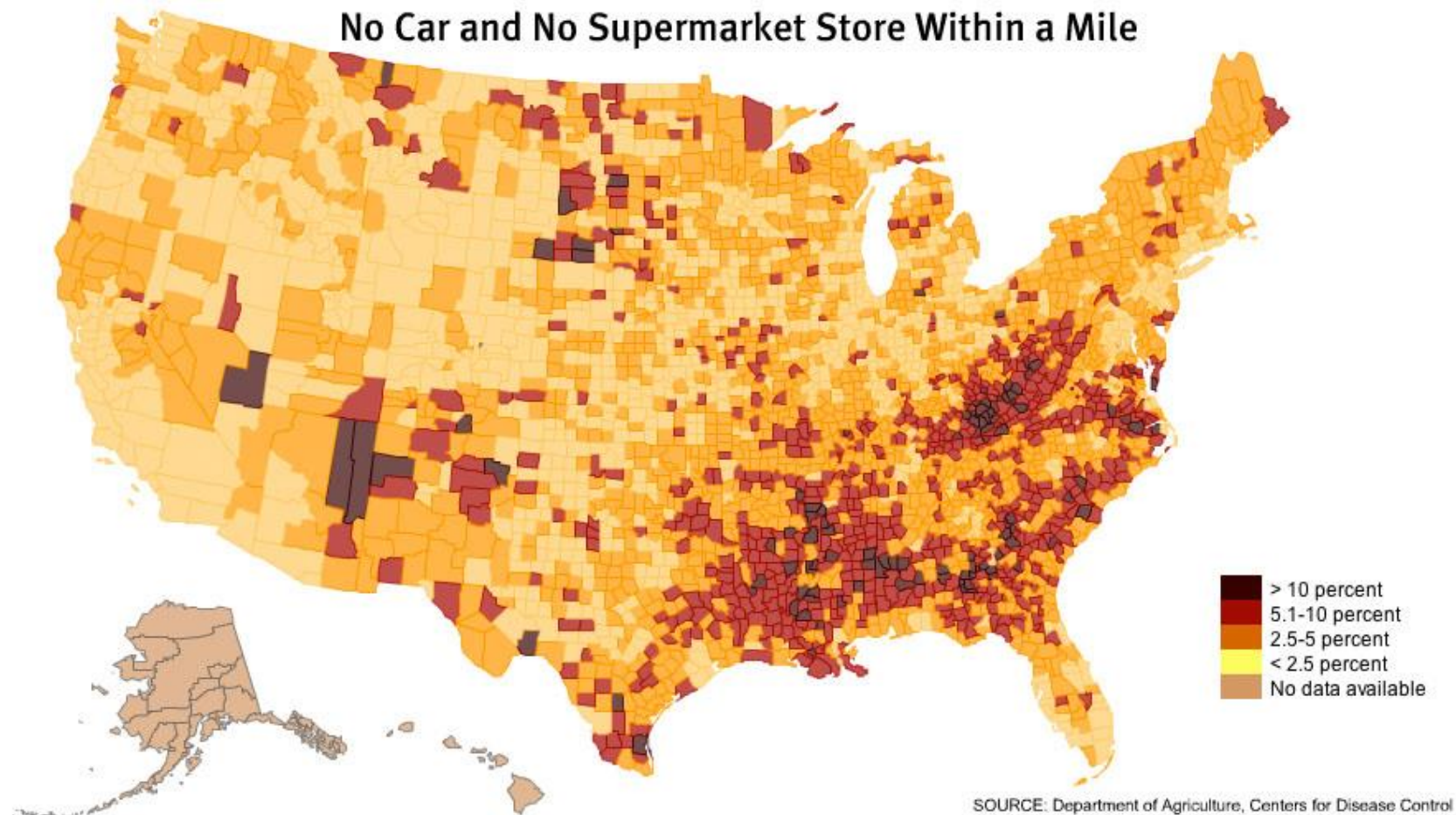
SNAP, Supplemental Nutrition Assistance Program

1. https://www.cdc.gov/pcd/issues/2019/18_0549.htm. Accessed July 11, 2020.

2. https://www.cdc.gov/pcd/issues/2018/18_0058.htm Accessed July 11, 2020.

3. <https://www.cnbc.com/2020/05/12/us-grocery-costs-jump-the-most-in-46-years-led-by-rising-prices-for-meat-and-eggs.html> Accessed July 11, 2020.

Food Deserts In The United States



<https://www.togetherla.org/food>. Accessed July 11th 2020.

Break The Loop Of Social Determinants Of Health



<https://catalyst.nejm.org/doi/full/10.1056/CAT.17.0312> Accessed July 11th 2020.

Factors Influencing Social Determinants Of Health

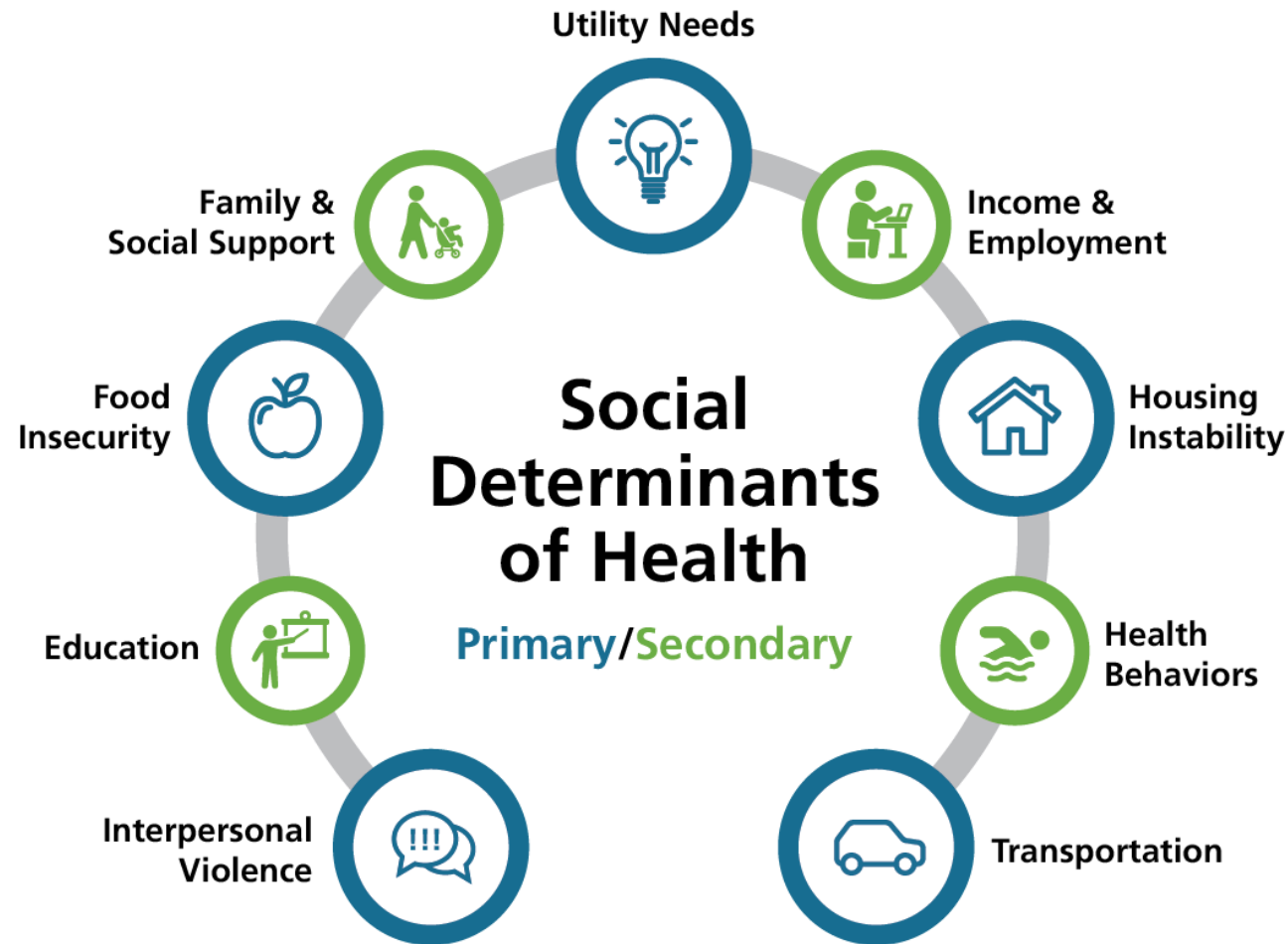
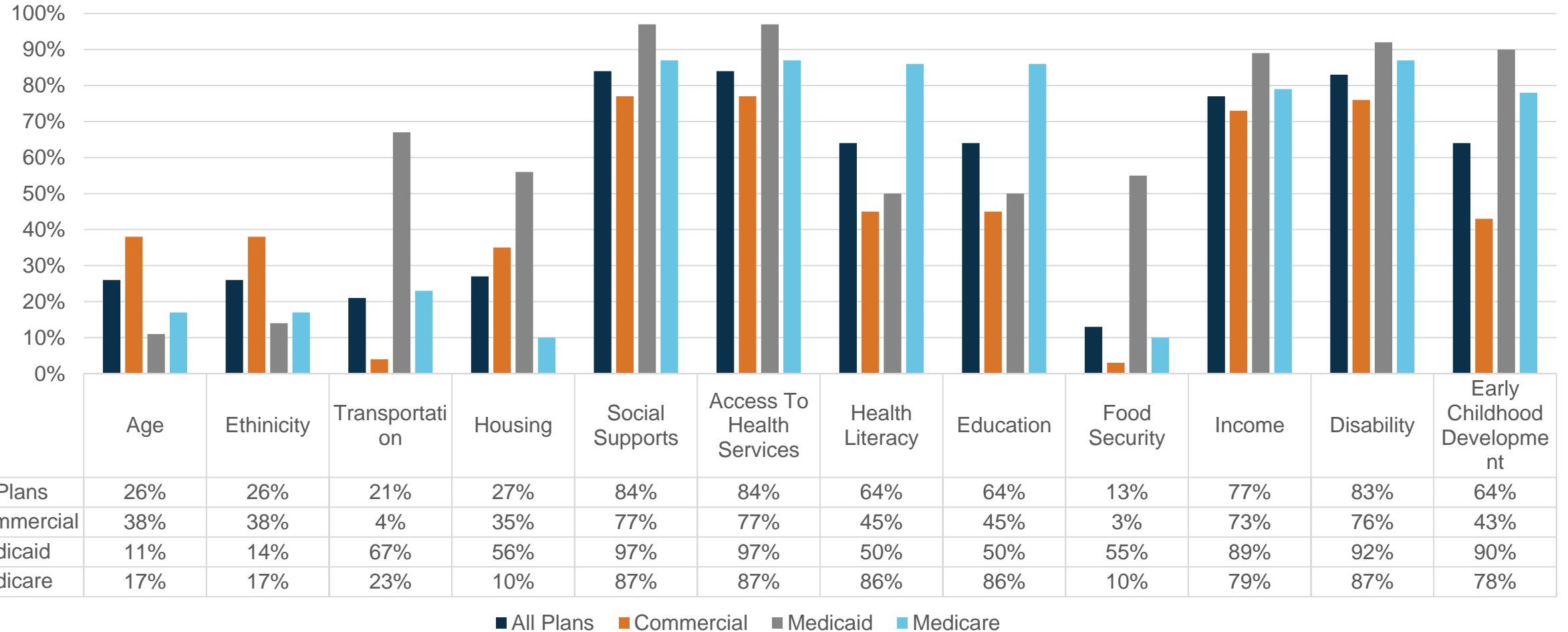


Image taken from The Alliance for the Determinants of Health

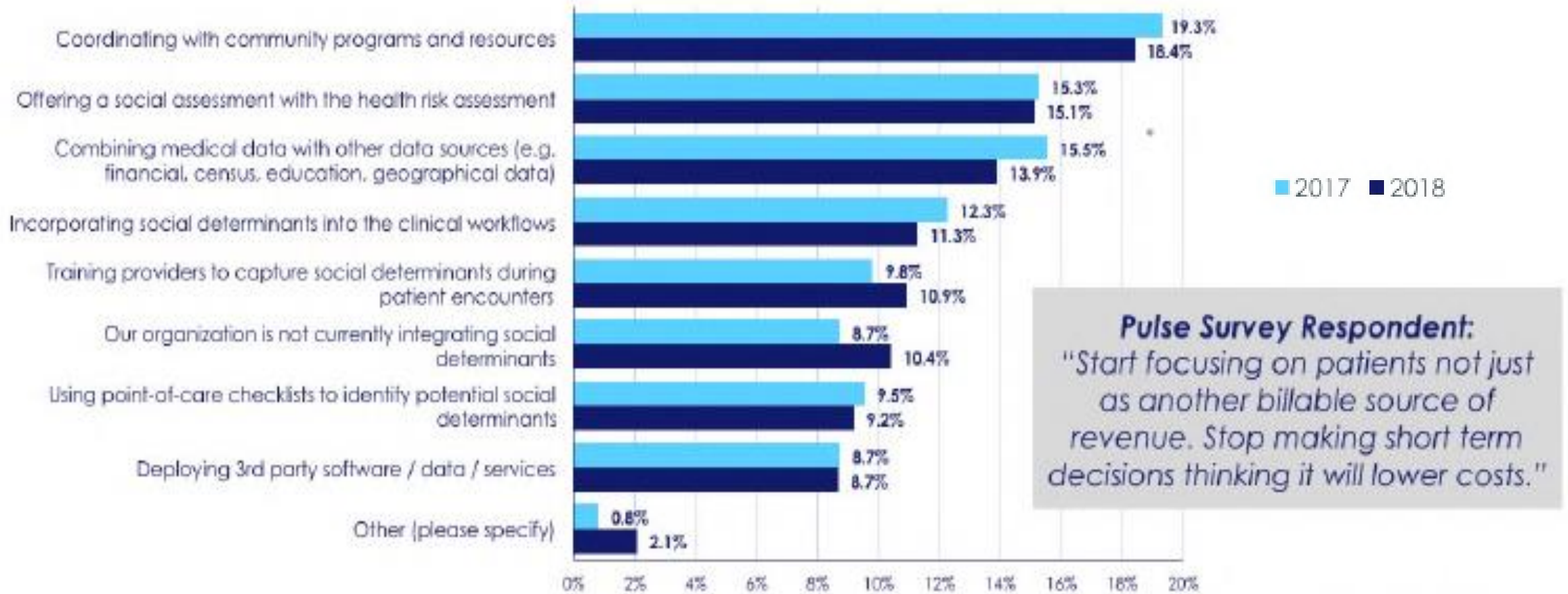
<https://alliancefordeterminantsofhealth.org/about-the-alliance/> Accessed on July 11th 2020

Utilization Of Social Determinants Of Health Strategies, By US Payor System



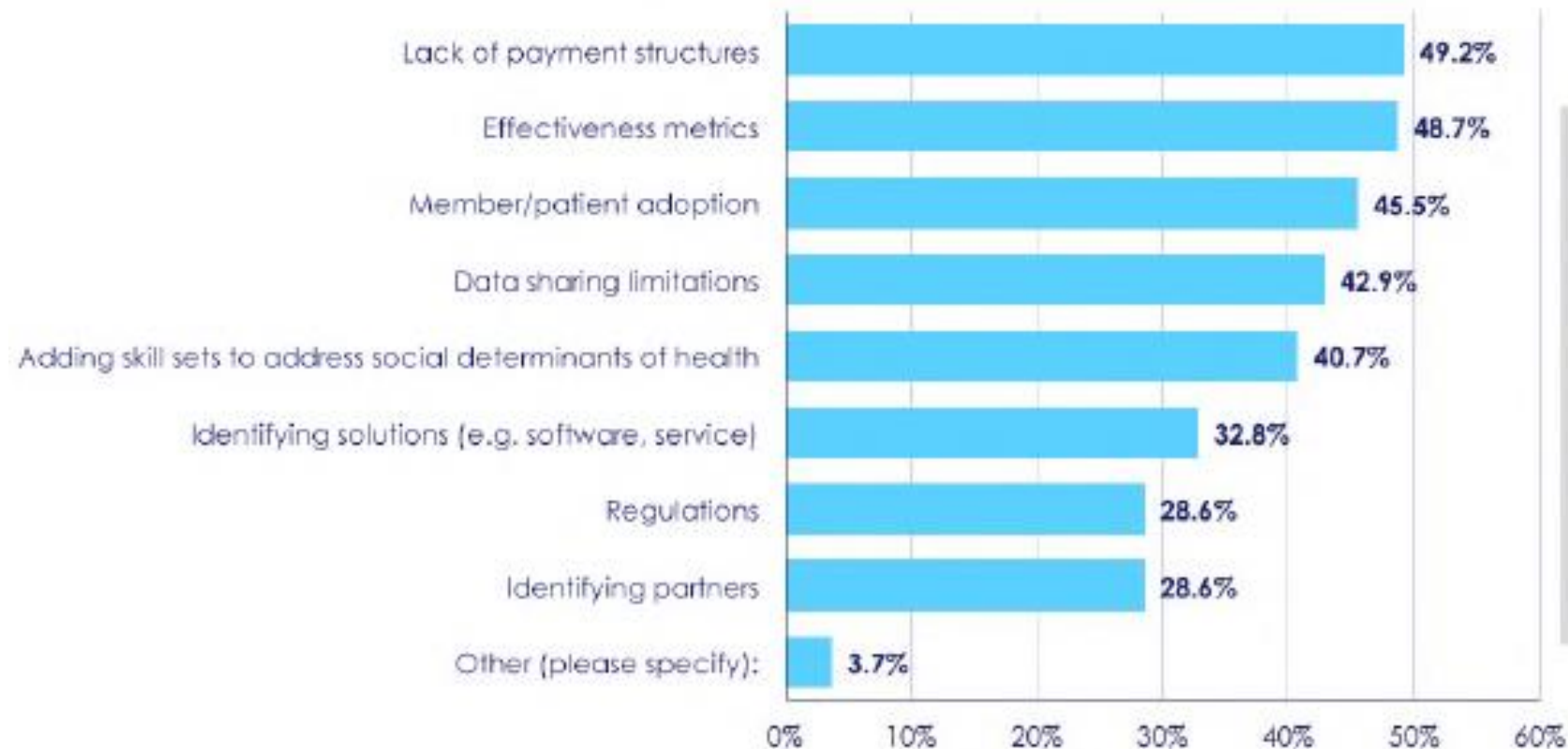
Otsuka America Pharmaceutical, Inc. & Lundbeck, LLC. (2019). *2019 Trends In Behavioral Health: A Reference Guide On The U.S. Behavioral Health Financing & Delivery System, 2nd Edition*. Rockville, MD: Otsuka America Pharmaceutical, Inc. Retrieved from PsychU.org

How is Your Organization Integrating SDoH Into Your Population Health Programs?



The 9th Annual Industry Pulse Survey. White paper. ©Change Healthcare. https://hceg.org/wp-content/uploads/Change_Healthcare_Industry_Pulse_2019_Digital.pdf.

Which of the Following Barriers Do You Anticipate Facing as You Look to Integrate and/or Support Non-medical Solutions in Your Population and Clinical Care Programs?



**Pulse Survey Respondent
(Hospital Executive):**
"As more of our consumers ... are moving to Managed Medicaid, we have to figure out how to treat that population with reduced payments but still provide the quality care."

The 9th Annual Industry Pulse Survey. White paper. ©Change Healthcare. https://hceg.org/wp-content/uploads/Change_Healthcare_Industry_Pulse_2019_Digital.pdf.

Health Plans Are Investing In SDoH

UnitedHealthcare (UHC) has invested \$350 million in housing programs over 6 years¹



Blue Cross Blue Shield (BCBS) Association Partnership with Lyft²



Aetna and the National Quality Forum (NQF) are partnering to promote payments to organizations addressing SDoH³



In 2017, Kaiser announced their plan to invest \$200 million to help address housing instability⁴



SDoH = Social Determinants of Health, BCBS = Blue Cross Blue Shield, NQF = National Quality Forum

1. UnitedHealthcare. (2017, June 28). UnitedHealthcare invests \$18.3 million to help build new affordable-housing communities in Michigan. Retrieved from <https://www.unitedhealthgroup.com>
2. BlueCross BlueShield. (2017, May 10). Blue Cross and Blue Shield and Lyft join forces to increase access to healthcare in communities with transportation deserts. Retrieved from <https://www.bcbs.com>
3. Caffrey, M. (2019, January 24). NQF, Aetna to collaborate on social determinants of health. AJMC Managed Markets Network. Retrieved from <https://www.ajmc.com>
4. Rosenberg, J. (2018, May 24). Kaiser Permanente investing \$200 million to address housing instability, improve health. AJMC Managed Markets Network. Retrieved from <https://www.ajmc.com>

Health Plans Are Investing In SDoH (Continued)



CVS/Aetna merger greatly expands access to care through minute-clinics¹



Medicaid plans operating under 1115 waiver authority are increasingly paying for non-healthcare services (transportation, short-term housing, programs for food insecurity, health literacy programs, etc.)²



Medicaid plans are increasingly requiring screening for SDoH²

SDoH = Social Determinants of Health

1. Kodjak, A. (2017, December 4). With Aetna Deal, CVS looks to turn stores into healthcare hubs. National Public Radio. Retrieved from <https://www.npr.org>
2. Artiga, S., Hinton E. (2018, May 10). Beyond healthcare: The role of social determinants in promoting health and health equity. Kaiser Family Foundation. Retrieved from <https://www.kff.org>

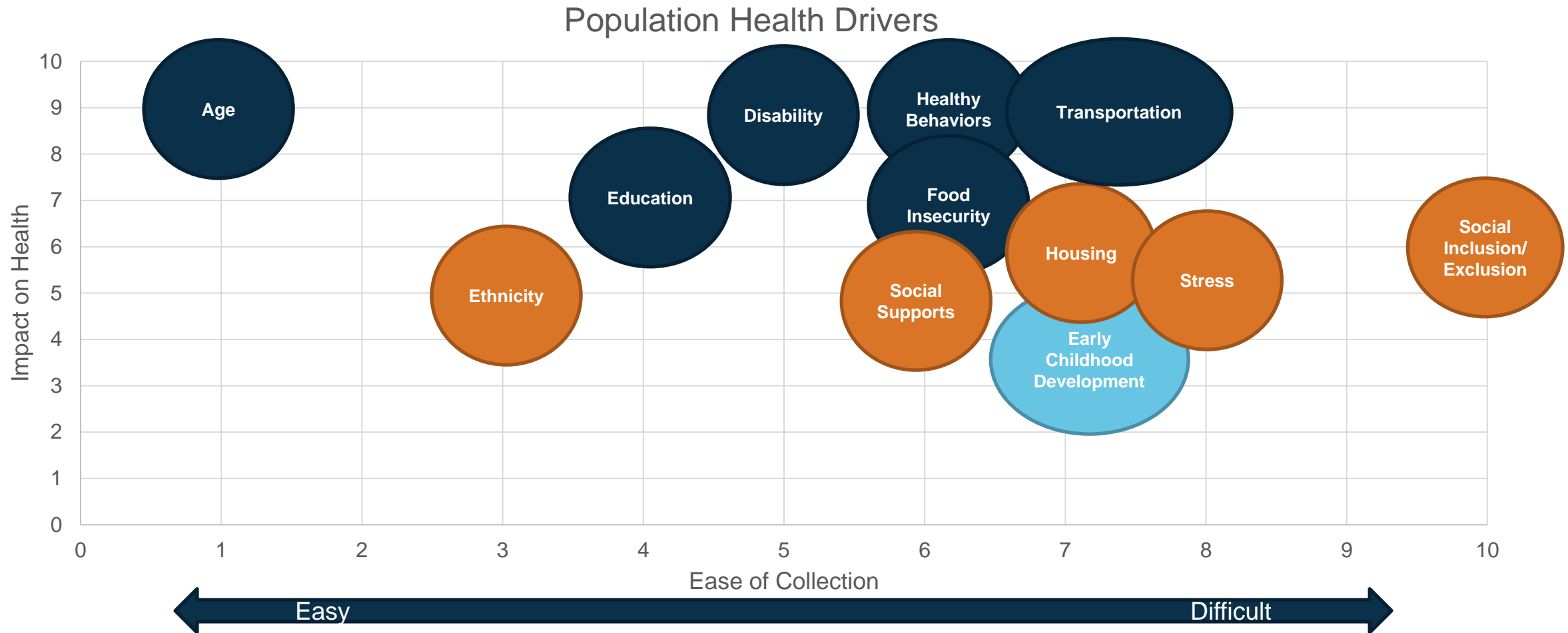
United healthcare (UHC) & American Medical Association (AMA) Working Together To Develop Billing Codes For SDoH

- In an April 2, 2019 press release from UHC & AMA, both organizations announced a collaboration to improve identifying SDoH to improve access and patient outcomes.
- UnitedHealthcare is awarding \$1 Million to Memphis-Area nonprofits to focus on SDoH²
 - Through UnitedHealthcare's Empowering Health program, 7 different organizations will be receiving grants
 - This is all part of UHC's efforts across the country to redefine access to care through greater investments in people's health through social and environmental factors

SDoH = Social Determinants of Health, UHC = UnitedHealthcare, AMA = American Medical Association

1. UnitedHealthcare. (2019, April 2). UnitedHealthcare and the AMA collaborate to understand and address social barriers preventing people's access to better health. Retrieved from <https://www.unitedhealthgroup.com>
2. Marusic, T. (2019, May). UnitedHealthcare awarding \$1 million to Memphis-area nonprofits to help address social determinants of health. Business Wire. Retrieved from <https://www.businesswire.com>

Return On Investment In Collecting Social Determinants Of Health

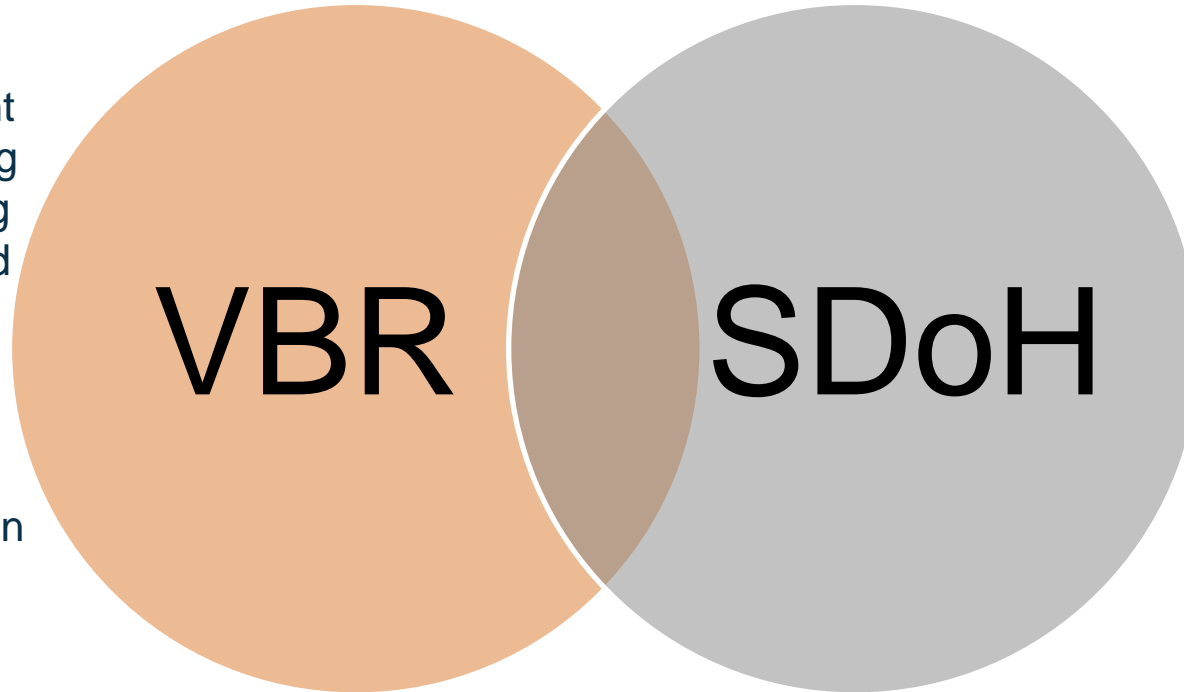


Adler, D. (2018, June). Succeeding in a managed care & value-based world: Who's afraid of the big bad wolf?. Presentation at the meeting of Tennessee Community Organizations, Nashville TN.

The Intersection Of Value-Based Reimbursement & Social Determinants Of Health

VBR – Ties reimbursement to quality and efficiency measures¹

- Facilitates the achievement of the triple aim—improving population health, reducing the costs of healthcare and improving individual member outcomes
- Supports provider engagement and payer/provider collaboration
- Rewards provider performance on agreed upon measures of quality and utilization



SDoH– Environmental factors that influence a population's health and functioning (e.g., socio-economic status, transportation, age)²

- Provide important detail that can guide interventions to achieve VBR goals
- Increase understanding of population needs
- Move VBR beyond easy-to-access measures that hold greater meaning

Question to Payers: How are you collecting SDoH and leveraging to support alternative payment arrangements?

VBR = Value-Based Reimbursement, SDoH = Social Determinants of Health

1. LaPointe, J. (2016, June 7). What is value-based care, what it means for providers?. Xtelligent Healthcare Media. Retrieved from <https://revcycleintelligence.com>
2. World Health Organization (WHO). (nd). Social determinants of health. Retrieved from <http://WHO.int>.

Value-Based Payments & SDoH

“From both the provider and payer sides, the answer to SDoH so far has largely been value-based payments for population health management programs, shown to work best when carried out in tandem with community partners such as social workers and local government agencies.”

-Tony Abraham, Author

SDoH = Social Determinants of Health

1 in 5 Patients at High Risk of Socioeconomic Health Problem, Survey Finds. Tony Abraham. December 12, 2018, Healthcare Dive. <https://www.healthcaredive.com/news/1-in-5-patients-at-high-risk-of-socioeconomic-health-problem-survey-finds/544233/>. Accessed July 11, 2020.

Questions?

Closing

Keep Up-To-Speed, On-The-Go



@PsychUCommunity



www.linkedin.com/company/PsychU



PsychU Community



PsychU Community Podcast

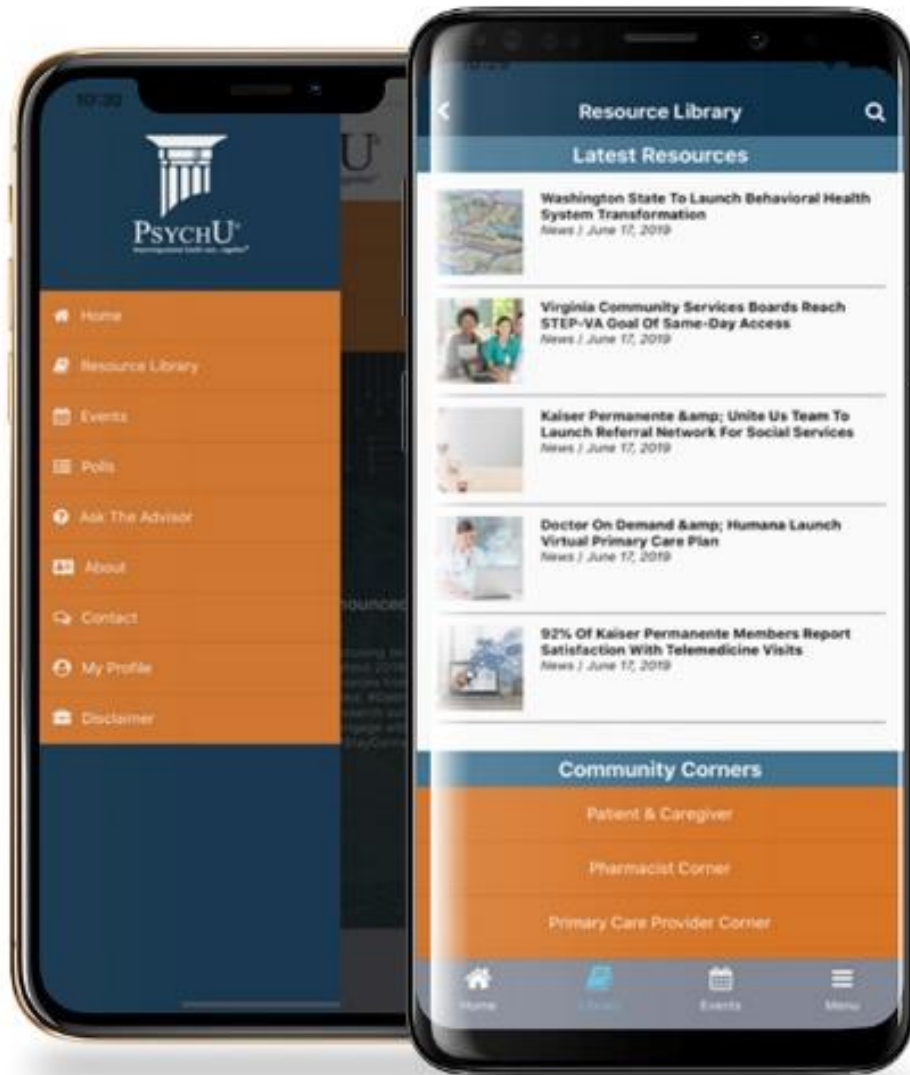


PsychU Community Podcast

Google Play and the Google Play logo are trademarks of Google LLC.

All product and company names are trademarks™ or registered® trademarks of their respective holders. Use of them does not imply any affiliation with or endorsement by them.

Download The PsychU App Today!



All of **Your** Resources In **One** Spot

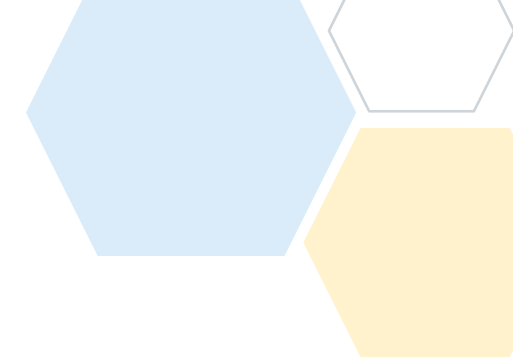
- ✓ Webinars & Live Events
- ✓ Resource Library
- ✓ Psychiatric Scales Collection
- ✓ Patient & Caregiver Corner



Download Now

For more information or to request a more detailed live presentation on this topic from your local Medical Science Liaison, please visit www.PsychU.org/events

www.PsychU.org



Social Determinants Of Health