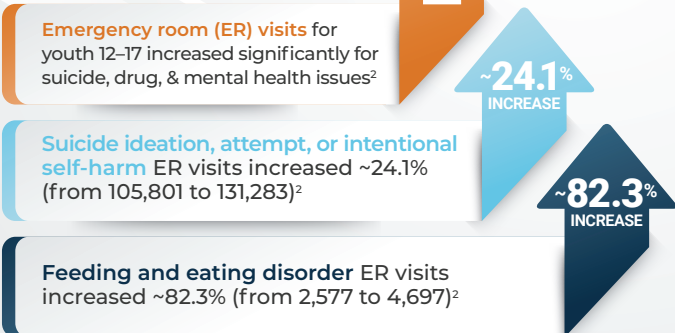


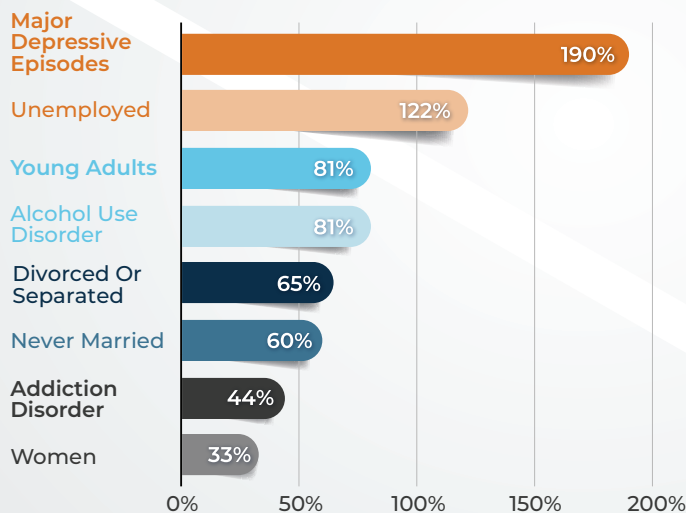
The Children's Mental Health Crisis

On October 19, 2021, a **national state of emergency in children's mental health** was declared* due to rising rates of mental health problems among children, adolescents, and their families during the coronavirus disease 2019 (COVID-19) public health emergency.¹



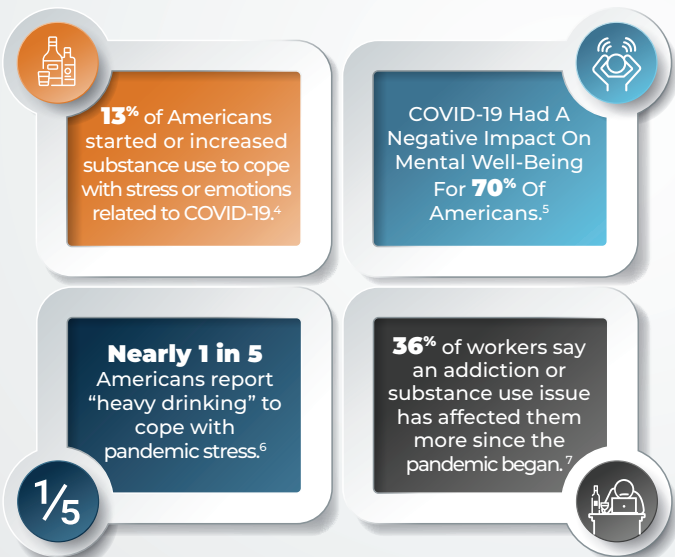
* Declared by the American Academy of Pediatrics, American Academy of Child & Adolescent Psychiatry, and Children's Hospital Association.

Suicide Is On The Rise³



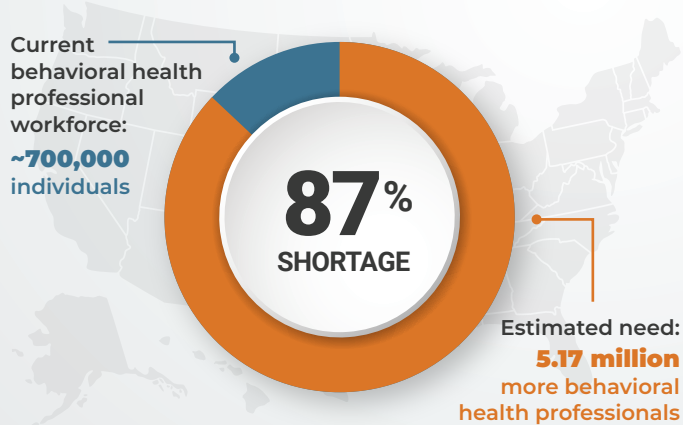
Off The Charts: Suicide increased **651%** among those with serious psychological distress.

Compounding Effects Of COVID-19

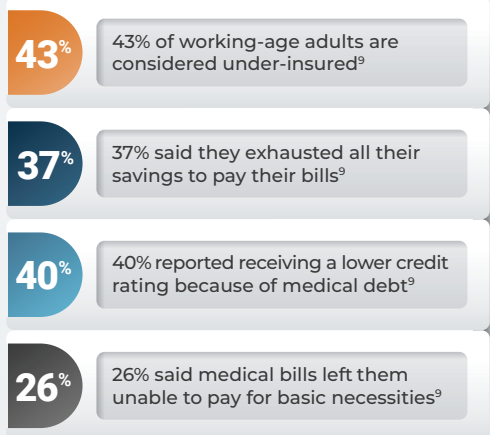


Looming Workforce Shortage In Behavioral Health⁸

The U.S. needs many more behavioral health professionals to provide care for the current population with mental illness and substance abuse issues.



The Rise Of The Under-Insured



National Tour To Strengthen Mental Health¹¹

The U.S. Department of Health & Human Services announced a new national mental health strategy, which calls for transforming health and social services infrastructure to:



Learn More About This National Strategy At PsychU.org

If you or someone you know is in crisis, please contact the **Suicide Prevention Hotline / Lifeline at 1-800-273-TALK (8255)**, or text the **Crisis Text Line at 741-741**.

References:

1. Aap-AACAP-Cha Declaration of a national emergency in child and Adolescent Mental Health. American Academy of Pediatrics. (n.d.). Retrieved April 28, 2022, from <https://www.aap.org/en/advocacy/child-and-adolescent-healthy-mental-development/aap-aacap-cha-declaration-of-a-national-emergency-in-child-and-adolescent-mental-health/>
2. Centers for Disease Control and Prevention. (2022, February 24). Pediatric emergency department visits before and during the covid-19 pandemic - United States, January 2019-January 2022. Retrieved April 28, 2022, from <https://www.cdc.gov/mmwr/volumes/71/wr/mm7108e1.htm>
3. Bommersbach, T. J., Rosenheck, R. A., & Rhee, T. G. (2022, January 19). National Trends of Mental Health Care Among US Adults Who Attempted Suicide in the Past 12 Months. JAMA Network. Retrieved April 28, 2022, from <https://jamanetwork.com/journals/jamapsychiatry/article-abstract/2787969>
4. American Psychological Association. (n.d.). Substance Use During The Pandemic. Monitor on Psychology. Retrieved October 8, 2021 from <https://www.apa.org/monitor/2021/03/substance-use-pandemic>
5. Key Substance Use and Mental Health Indicators in the United States: Results from the 2020 National Survey on Drug Use and Health. SAMHSA. (2021, October). Retrieved April 28, 2022, from <https://www.samhsa.gov/data/sites/default/files/reports/rpt35325/NSDUHFRPDWHTMFiles2020/2020NSDUHFRPDW102121.pdf>
6. Hauck, G. (2021, September 22). Americans Are Using Alcohol To Cope With Pandemic Stress: Nearly 1 In 5 Report 'Heavy Drinking'. USA Today. Retrieved October 8, 2021, from <https://www.usatoday.com/story/news/health/2021/09/22/covid-19-pandemic-heavy-drinkingsurvey-alkermes/5798036001/>
7. The Standard. November 2020. COVID-19 Pandemic Impact On Behavioral Health In The Workplace. Infographic | StanCorp Financial Group. <https://www.standard.com/forms/21992.pdf>
8. 4.5 million more behavioral health professionals needed in U.S. a shortage of 87%. (2021, February 01). Retrieved May 06, 2021, from <https://psychu.org/4-5-million-more-behavioral-health-professionals-needed-in-u-s-a-shortage-of-87/>
9. Collins, S. R., Gunja, M. Z., & Abouafia, G. N. (2012). US health insurance coverage in 2020: A looming crisis in affordability. Findings from the commonwealth fund biennial health insurance survey, 2020.
10. Minemyer, P. (2022, March 24). Appeals Court overrules ruling against UnitedHealth in Landmark Mental Health Parity Class Action. Fierce Healthcare. Retrieved April 28, 2022, from <https://www.fiercehealthcare.com/payers/appeals-court-overturns-ruling-against-unitedhealth-landmark-mental-health-parity-class>
11. Assistant Secretary for Public Affairs (ASPA). (2022, April 26). National tour to Strengthen Mental Health. HHS.gov. Retrieved April 28, 2022, from <https://www.hhs.gov/hhsour/index.html#:~:text=Secretary%20Becerra%20and%20other%20HHS,care%20system%20in%20our%20communities>

PsychU is supported by Otsuka Pharmaceutical Development & Commercialization, Inc. (OPDC), Otsuka America Pharmaceutical, Inc. (OAPI), and Lundbeck, LLC - committed supporters of the mental health treatment community. The opinions expressed by PsychU's contributors are their own and are not endorsed or recommended by PsychU or its sponsors. The information provided through PsychU is intended for the educational benefit of mental health care professionals and others who support mental health care. It is not intended as, nor is it a substitute for, medical care, advice, or professional diagnosis. Health care professionals should use their independent medical judgement when reviewing PsychU's educational resources. Users seeking medical advice should consult with a health care professional. No CME or CEU credits are available through any of the resources provided by PsychU. Some of the contributors may be paid consultants for OPDC, OAPI, and / or Lundbeck, LLC.

©2022 Otsuka Pharmaceutical Development & Commercialization, Inc. All rights reserved.